



## MINSUP™ CLAW COUPLINGS



### Applications

Minsup™ claw couplings are a universal hose coupling that provides a quick, safe & reliable connection and used in conjunction with Minsup™ clamps, for conveying air & water in a variety of underground & surface mining applications.

### Materials

- 316 stainless steel
- SG iron 1083 zinc plated

### Features

- Quick & easy, airtight connection
- Standard coupling head ensures the interchangeability of sizes

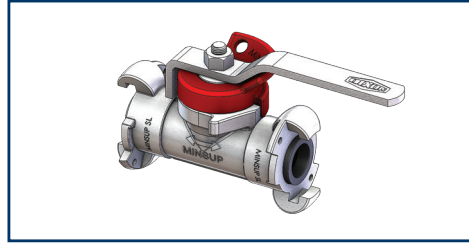
### Options

- A Type BSP M/F with standard seal (500 PSI)
- A Type BSP M/F with bellow seal (1000 PSI)
- Surelock™ BSP M/F (1000 PSI)
- Various seal materials & NPT threads available

### Sizes

- A Type 3/8" – 1¼"
- Surelock 3/8" – 3"
- Clamps ½" – 3"

## MINSUP™ ECONOVALVES



### Applications

General purpose ball valve with a solid construction and a unique one piece ball and stem; suitable for mining and industrial applications.

### Materials

- Body: SG iron ISO 1083
- Seals: Nitrile Butadiene

### Features

- ½" - 1" = 500 PSI WP
- 1½" - 2" = 300 PSI WP

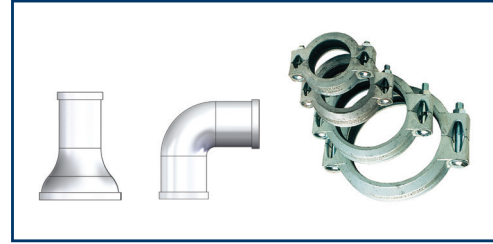
### Options

- BSP female
- Surelock™
- Lockout device

### Sizes

- Sizes range from ½" - 2"

## SHOULDERED PIPE FITTINGS



### Applications

Shouldered couplings and fittings are used to join shouldered end pipe & fittings in mining and construction industries to transfer water or air.

### Materials

- Couplings: SG iron
- Fittings & pipe: mild steel galvanised

### Features

- Couplings to AS1831 400-250-12
- Standard gasket is Buna-N
- Fittings & pipe to AS1792:2006

### Options

- EPDM gasket is available on request

### Sizes

- Range from 50mm - 600mm

## HOSE (AIR & WATER)



### Applications

A wide range of suction and delivery hoses suitable for a variety of industries in addition to mining such as construction and general maintenance.

### Materials

- Rubber and PVC

### Features

- UV stabilised

### Options

- Rubber Super Air & Water delivery
- Rubber Heavy Duty Air & Water delivery
- PVC Safety Yellow Air & Water delivery
- PVC & Rubber FRAS

## HOSE ASSEMBLIES



### Applications

A full range of hose assemblies for your mining requirements:

- Rubber & PVC
- Air / water hose assemblies
- Crimped or Bolted clamp end connections
- Custom made assemblies
- Hydro-statically tested & certified

## HOSE (MATERIAL HANDLING)



### Applications

Heavy duty material handling hose, suitable for suction and delivery in the transfer of bulk, slurry, cement and abrasive products especially designed for severe applications such as mines.

- Muff coupling hose
- R.C. sampling hose
- Custom hand built material handling
- Hose assemblies

## CAMLOCKS



### Applications

The Dixon Cam & Groove coupling is a quick connect coupling for use on hose, pipe, tubing and tanks conveying a wide variety of liquids, dry bulk materials and vapours.

### Materials

- Aluminium, stainless steel CF8M, bronze, brass, poly, nyglass

### Features

- Leak proof connection
- Easy to use – no tools required

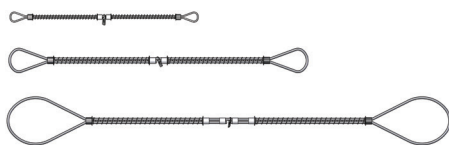
### Options

- Male & Female BSP threads
- Male & Female NPT threads
- Hose tail

### Sizes

- 15mm – 200mm

## MINSUP™ WHIPCHECKS



### Applications

Ideally suited to heavy industrial, mining, quarries or construction where the transfer of media is under high working pressure.

### Materials

- G15710 GC galvanised steel
- Mild steel ferrules
- Zinc plated steel spring

### Features

- Hose-to-hose
- Crimped steel ferrules suitable for underground coal mines
- Highly resistant to rust & corrosion
- No tools needed, easy to install & remove

### Sizes

- 3 size ranges available; small, medium and large

## CLAMPS



### Applications

A range of general purpose band clamps and tools suitable for mining applications.

- Mikalor super clamps (W4) 304 stainless steel
- Mikalor super clamps (W1) mild steel
- K series band clamp 300 series stainless steel
- F series band clamp 300 series stainless steel
- Ultra-Lok Band clamp 201 stainless steel
- Band & buckles 201 stainless steel

## VALVES



### Applications

A range of general purpose valves such as; ball, knife gate, diaphragm, butterfly and check valves suitable for mining applications.

### Body Material

- 316 stainless steel
- Cast and ductile iron

### Features

- Lockable options

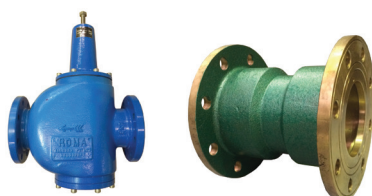
### Options

- BSP, flanged and shouldered connections available

### Sizes

- 6mm - 300mm

## PRESSURE REDUCING VALVES

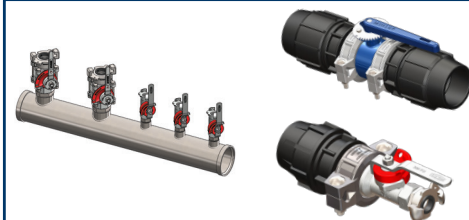


### Applications

Reducing static & dynamic fluid pressure in fresh and flush water applications in mines and high rise buildings.

- Roma pressure reducing valve
- Ration pressure reducing valve

## VALVE / HEADER ASSEMBLIES



### Applications

Valve assemblies are a combination of commonly used products to create a pre-assembled kit to assist with saving on installation time. They are used for transferring air/water in underground mining applications.

- Custom design available
- Detailed drawings available

## PLASSON



**Applications**  
 Plasson compression fittings are designed for connecting all forms of PE pipe.

**Body Material**

- Polypropylene, high-grade copolymer

**Features**

- 2 split rings, 2 seals, 2 nuts
- ISO 17885, AS/NS 4129, ISO 7/1, BS 21, DIN 2999, UNI 9561, NEN 3258, AS 1722, DIN 8076

**Options**

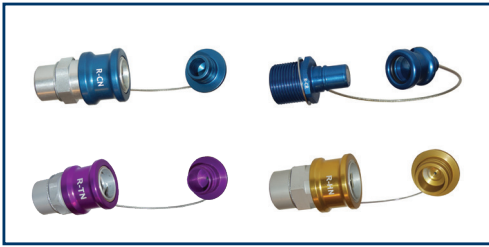
- Other split ring and seal materials available on request
- Metric and BSP fittings available

**Sizes**

- Range from ½" - 6"



## FLOWMAX FLUID MANAGEMENT



**Applications**  
 Designed for onsite refueling of construction, mining, forestry and agricultural equipment.

**Body Material**

- Anodised aircraft grade aluminium
- Stainless steel

**Features**

- Colour coded for quick & easy identification
- Provides protection against cross contamination
- Interchangeable with industry standard

**Options**

- Nozzles
- Receivers
- Connectors

**Sizes**

- Nozzles 1" - 2"
- Fittings ½" - 1"

## DY-MARK PAINT



**Applications**  
 Mine Marking paint specially formulated for above/below ground areas such as marking out ore zones in grading control, pit walls and survey grid layouts.

**Material**

- High opacity, true colour pigment

**Features**

- 360°C valve for any direction spray

**Options**

- Horizontal & vertical mine marking
- Variety of colours

## ANFO PRESSURE LOADERS



**Applications**  
 Minsup™ pressure loaders are designed for loading drilled ammonium nitrate/fuel oil (ANFO). A full range of spare parts are also available.

**Materials**

- Mild steel

**Features**

- Available in a variety of sizes
- A variety of operation methods available

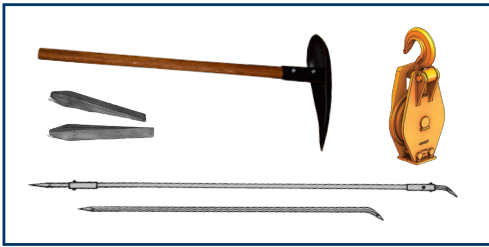
**Spares**

- Full range of spare components available

**Sizes**

- Sizes range from 45kg – 500kg

## HAND HELD MINING



**Applications**  
 A wide range of tools and accessories available for your mining requirements.

- Minsup™ scraper block
- Minsup™ pelican picks
- Rock bolt wedges
- Scaling bars

## LIFTING GEAR



**Applications**  
 A variety of equipment and accessories to assist with your mining requirements.

- Galvanised steel rope
- Poly rope
- Galvanised steel shackles
- Galvanised steel chain

Dixon is a premier manufacturer and supplier of mining fluid transfer products for a wide range of applications and is the exclusive manufacturer of Minsup™ fittings.

With an unsurpassed reputation Dixon is committed to providing value added services, superior customer service, technical support and training to the mining industry. With our global distribution footprint Dixon can efficiently service our customers with the right goods at the right time.

The mining range focuses on a maximum level of safety, high quality, reliability and every hose, fitting, valve or component - is built to last longer, perform better and reduce the risk of down-time.

In addition, Dixon offers a complete range of made to order hose assemblies which can be tested, certified and feature Dixon hose, couplings, clamps and ferrules providing a fully integrated and safe Dixon assembly.

**“Ultimately our most important connection is with our customers and Dixon is committed to being the easiest company to do business with everyday.”**



**Customer Service: +44 (0)1772 323529**  
**Email: [sales@dixoneurope.co.uk](mailto:sales@dixoneurope.co.uk)**



**Dixon designs and manufactures just the right solution to meet those special fluid transfer challenges where a standard product just won't do.**

**The difference boils down to commitment. It's called Uncommon Excellence™ – and we've been living it for over a century.**



*The Right Connection®*

- CUSTOMER SERVICE • INNOVATION • MANUFACTURING •
- QUALITY • TECHNICAL EXPERTISE • EXCELLENCE • DESIGN •