

EA-Series Water-Blast Interchange

Interchange Data:

- Water-Blast Interchange
- Parker Series-WB, Aeroquip FD69, Snap-Tite 56-Series

Materials:

- Machined components are manufactured using solid high strength Steel bar stock
- Stainless Steel springs and retaining rings maximise corrosion resistance and extend service life
- Latches are manufactured from high-strength Steel and plated with electroless nickel
- Steel nipples are machined from solid high strength Steel bar stock and hardened
- Machined Steel componentry is plated using ROHS Compliant Trivalent Chrome



Seal Components:

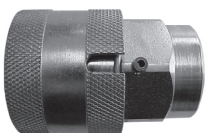
- Nitrile (Buna-N) seals are standard, providing a temperature range of -40°C to +121°C (-40°F to +250°F)
- Couplers have a PTFE Anti-Extrusion ring, providing resistance to O-Ring dynamic impulse pressure damage

Rated Pressure Chart:

EA-SERIES WATER-BLAST INTERCHANGE (CONNECTED)				
BODY SIZE	COUPLER/PLUG COUPLED			
	MAX. WORKING		BURST	
	PSI	Bar	PSI	Bar
1/2"	10,000	700	30,000	2,100

Technical Specifications:

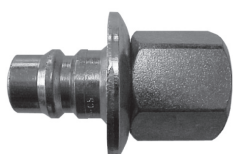
BODY SIZE	INTERCHANGE STANDARDS				FUNCTIONAL PARAMETERS				
	U.S. MILITARY	U.S. GOVERNMENT	INTERNATIONAL STANDARDS	ANSI/NFPA STANDARDS	LOCKING BALL QUANTITY	AIR INCLUSION	FLUID LOSS	VACUUM INCH HG	FLOW ΔP = 40 PSI L/MIN
1/2"	-	-	-	-	Maxi-Latch	N/A	N/A	N/R	150



(Female Thread)

EA-SERIES WATER-BLAST INTERCHANGE (COUPLER)

PART NO.	BODY SIZE	THREAD SIZE	BODY MATERIAL
4EAF3	1/2"	3/8"-18 NPTF	Steel
4EAF4	1/2"	1/2"-14 NPTF	Steel



(Female Thread)

EA-SERIES WATER-BLAST INTERCHANGE (NIPPLE)

PART NO.	BODY SIZE	THREAD SIZE	BODY MATERIAL
EA4F3	1/2"	3/8"-18 NPTF	Steel
EA4F4	1/2"	1/2"-14 NPTF	Steel