

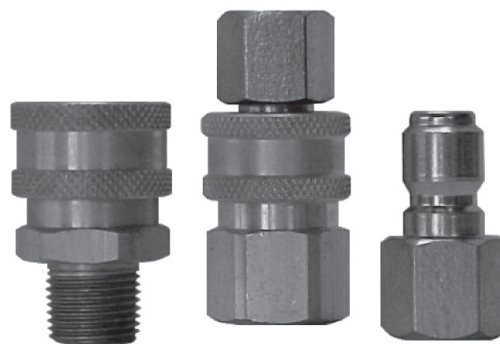
E-Series Straight-Through Interchange

Interchange Data:

- Straight-Through Pressure-Wash Interchange
- Parker ST-Series, Foster FST-Series, Tomco Series-ST, Hansen ST-Series

Materials:

- Machined components are manufactured using solid Steel, Brass, or 303 Stainless Steel bar stock.
- Stainless Steel balls, retaining rings, and springs maximise corrosion resistance and extend service life.
- Steel componentry is plated using ROHS Compliant Trivalent Chrome.
- 1¼" to 2" Brass couplers have Steel sleeves as standard to maximise service life, hardened to resist deformation.
- Steel nipples are hardened to provide heavy duty performance.



Seal Components:

- Nitrile (Buna-N) seals are standard, providing a temperature range of -40°C to +121°C (-40°F to +250°F)

Rated Pressure Chart:

E-SERIES STRAIGHT-THROUGH INTERCHANGE (CONNECTED)																
BODY SIZE	BRASS COUPLER/STEEL PLUG				BRASS COUPLER/PLUG				BRASS COUPLER/303 STAINLESS STEEL PLUG				303 STAINLESS STEEL COUPLER/PLUG			
	Max. Working		Burst		Max. Working		Burst		Max. Working		Burst		Max. Working		Burst	
	PSI	Bar	PSI	Bar	PSI	Bar	PSI	Bar	PSI	Bar	PSI	Bar	PSI	Bar	PSI	Bar
1/8"	4,000	276	16,100	1110	2,800	193	11,800	814	4,000	276	20,000	1379	5,000	345	29,900	2062
1/4"	5,500	379	22,000	1517	3,800	262	15,300	1055	5,500	379	23,500	1621	7,500	517	33,800	2331
3/8"	4,500	310	18,300	1262	3,000	207	14,100	972	4,500	310	21,200	1462	7,500	517	34,400	2372
1/2"	3,500	241	13,900	960	2,400	166	9,700	669	3,500	241	14,000	966	3,500	241	14,000	966
3/4"	3,100	207	12,900	870	2,000	138	8,700	600	2,500	172	12,500	862	3,000	207	19,400	1338
1"	2,500	172	10,100	697	1,600	110	6,700	462	2,000	138	8,800	607	2,000	138	9,100	628
1 1/4"	2,500	172	12,600	870	1,800	124	7,500	517	1,800	124	7,500	517	2,000	138	10,000	690
1 1/2"	2,500	172	10,000	690	1800	124	7,500	517	1,800	124	7,500	517	2,000	138	12,000	828
2"	2,500	172	10,000	690	1800	124	7,500	517	1,800	124	5,500	379	2,000	138	9,000	621

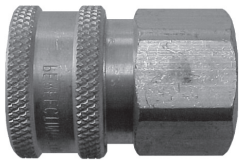
R

Technical Specifications:

BODY SIZE	INTERCHANGE STANDARDS				FUNCTIONAL PARAMETERS				
	U.S. MILITARY	U.S. GOVERNMENT	INTERNATIONAL STANDARDS	ANSI/NFPA STANDARDS	LOCKING BALL QUANTITY	AIR INCLUSION	FLUID LOSS	VACUUM INCH HG	FLOW ΔP = 15 PSI L/MIN
1/8"	-	-	-	-	6	N/A	N/A	N/R	11
1/4"	-	-	-	-	6	N/A	N/A	N/R	23
3/8"	-	-	-	-	8	N/A	N/A	N/R	53
1/2"	-	-	-	-	8	N/A	N/A	N/R	90
3/4"	-	-	-	-	8	N/A	N/A	N/R	218
1"	-	-	-	-	8	N/A	N/A	N/R	376
1 1/4"	-	-	-	-	8	N/A	N/A	N/R	564
1 1/2"	-	-	-	-	8	N/A	N/A	N/R	940
2"	-	-	-	-	8	N/A	N/A	N/R	1316



Quick Release Couplings



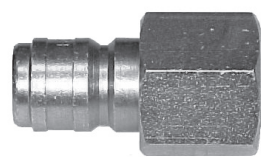
(Female Thread)

E-SERIES STRAIGHT-THROUGH INTERCHANGE (COUPLER)

PART NO.	BODY SIZE	THREAD SIZE	BODY MATERIAL
1EF1-B	1/8"	1/8"-27 NPTF	Brass
1EF1-S	1/8"	1/8"-27 NPTF	303 Stainless Steel
2EF2-B	1/4"	1/4"-18 NPTF	Brass
2EBF2-B	1/4"	1/4"-19 BSPP	Brass
2EF2-S	1/4"	1/4"-18 NPTF	303 Stainless Steel
3EF3-B	3/8"	3/8"-18 NPTF	Brass
3EBF3-B	3/8"	3/8"-19 BSPP	Brass
3EF3-S	3/8"	3/8"-18 NPTF	303 Stainless Steel
4EF4-B	1/2"	1/2"-14 NPTF	Brass
4EBF4-B	1/2"	1/2"-14 BSPP	Brass
4EF4-S	1/2"	1/2"-14 NPTF	303 Stainless Steel
6EF6-B	3/4"	3/4"-14 NPTF	Brass
6EBF6-B	3/4"	3/4"-14 BSPP	Brass
6EF6-S	3/4"	3/4"-14 NPTF	303 Stainless Steel
8EF8-B	1"	1"-11 1/2 NPTF	Brass
8EBF8-B	1"	1"-11 BSPP	Brass
8EF8-S	1"	1"-11 1/2 NPTF	303 Stainless Steel
10EF10-B	1 1/4"	1 1/4"-11 1/2 NPTF	Brass
10EF10-S	1 1/4"	1 1/4"-11 1/2 NPTF	303 Stainless Steel
12EF12-B	1 1/2"	1 1/2"-11 1/2 NPTF	Brass
12EF12-S	1 1/2"	1 1/2"-11 1/2 NPTF	303 Stainless Steel
16EF16-B	2"	2"-11 1/2 NPTF	Brass
16EF16-S	2"	2"-11 1/2 NPTF	303 Stainless Steel

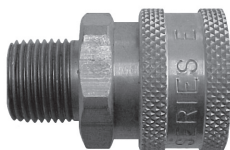
E-SERIES STRAIGHT-THROUGH INTERCHANGE (NIPPLE)

PART NO.	BODY SIZE	THREAD SIZE	BODY MATERIAL
E1F1	1/8"	1/8"-27 NPTF	Steel
E1F1-B	1/8"	1/8"-27 NPTF	Brass
E1F1-S	1/8"	1/8"-27 NPTF	303 Stainless Steel
E2F2	1/4"	1/4"-18 NPTF	Steel
E2F2-B	1/4"	1/4"-18 NPTF	Brass
E2BF2-B	1/4"	1/4"-19 BSPP	Brass
E2F2-S	1/4"	1/4"-18 NPTF	303 Stainless Steel
E3F3	3/8"	3/8"-18 NPTF	Steel
E3F3-B	3/8"	3/8"-18 NPTF	Brass
E3BF3-B	3/8"	3/8"-19 BSPP	Brass
E3F3-S	3/8"	3/8"-18 NPTF	303 Stainless Steel
E4F4	1/2"	1/2"-14 NPTF	Steel
E4F4-B	1/2"	1/2"-14 NPTF	Brass
E4BF4-B	1/2"	1/2"-14 BSPP	Brass
E4F4-S	1/2"	1/2"-14 NPTF	303 Stainless Steel
E6F6	3/4"	3/4"-14 NPTF	Steel
E6F6-B	3/4"	3/4"-14 NPTF	Brass
E6BF6-B	3/4"	3/4"-14 BSPP	Brass
E6F6-S	3/4"	3/4"-14 NPTF	303 Stainless Steel
E8F8	1"	1"-11 1/2 NPTF	Steel
E8F8-B	1"	1"-11 1/2 NPTF	Brass
E8BF8-B	1"	1"-11 BSPP	Brass
E8F8-S	1"	1"-11 1/2 NPTF	303 Stainless Steel
E10F10	1 1/4"	1 1/4"-11 1/2 NPTF	Steel
E10F10-B	1 1/4"	1 1/4"-11 1/2 NPTF	Brass
E10F10-S	1 1/2"	1 1/4"-11 1/2 NPTF	303 Stainless Steel
E12F12	1 1/2"	1 1/2"-11 1/2 NPTF	Steel
E12F12-B	1 1/2"	1 1/2"-11 1/2 NPTF	Brass
E12F12-S	1 1/2"	1 1/2"-11 1/2 NPTF	303 Stainless Steel
E16F16	2"	2"-11 1/2 NPTF	Steel
E16F16-B	2"	2"-11 1/2 NPTF	Brass
E16F16-S	2"	2"-11 1/2 NPTF	303 Stainless Steel



(Female Thread)

R



(Male Thread)

E-SERIES STRAIGHT-THROUGH INTERCHANGE (COUPLER)

PART NO.	BODY SIZE	THREAD SIZE	BODY MATERIAL
1EM1-B	1/8"	1/8"-27 NPTF	Brass
1EM1-S	1/8"	1/8"-27 NPTF	303 Stainless Steel
2EM2-B	1/4"	1/4"-18 NPTF	Brass
2EM2-S	1/4"	1/4"-18 NPTF	303 Stainless Steel
3EM3-B	3/8"	3/8"-18 NPTF	Brass
3EM3-S	3/8"	3/8"-18 NPTF	303 Stainless Steel
4EM4-B	1/2"	1/2"-14 NPTF	Brass
4EM4-S	1/2"	1/2"-14 NPTF	303 Stainless Steel
6EM6-B	3/4"	3/4"-14 NPTF	Brass
6EM6-S	3/4"	3/4"-14 NPTF	303 Stainless Steel
8EM8-B	1"	1"-11 1/2 NPTF	Brass
8EM8-S	1"	1"-11 1/2 NPTF	303 Stainless Steel

E-SERIES STRAIGHT-THROUGH INTERCHANGE (NIPPLE)

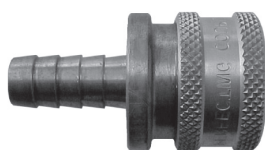
PART NO.	BODY SIZE	THREAD SIZE	BODY MATERIAL
E1M1	1/8"	1/8"-27 NPTF	Steel
E1M1-B	1/8"	1/8"-27 NPTF	Brass
E1M1-S	1/8"	1/8"-27 NPTF	303 Stainless Steel
E2M2	1/4"	1/4"-18 NPTF	Steel
E2M2-B	1/4"	1/4"-18 NPTF	Brass
E2M2-S	1/4"	1/4"-18 NPTF	303 Stainless Steel
E3M3	3/8"	3/8"-18 NPTF	Steel
E3M3-B	3/8"	3/8"-18 NPTF	Brass
E3M3-S	3/8"	3/8"-18 NPTF	303 Stainless Steel
E4M4	1/2"	1/2"-14 NPTF	Steel
E4M4-B	1/2"	1/2"-14 NPTF	Brass
E4M4-S	1/2"	1/2"-14 NPTF	303 Stainless Steel
E6M6	3/4"	3/4"-14 NPTF	Steel
E6M6-B	3/4"	3/4"-14 NPTF	Brass
E6M6-S	3/4"	3/4"-14 NPTF	303 Stainless Steel
E8M8	1"	1"-11 1/2 NPTF	Steel
E8M8-B	1"	1"-11 1/2 NPTF	Brass
E8M8-S	1"	1"-11 1/2 NPTF	303 Stainless Steel
E10M10	1 1/4"	1 1/4"-11 1/2 NPTF	Steel
E10M10-B	1 1/4"	1 1/4"-11 1/2 NPTF	Brass
E12M12	1 1/2"	1 1/2"-11 1/2 NPTF	Steel
E12M12-B	1 1/2"	1 1/2"-11 1/2 NPTF	Brass
E16M16	2"	2"-11 1/2 NPTF	Steel
E16M16-B	2"	2"-11 1/2 NPTF	Brass



(Male Thread)

E-SERIES STRAIGHT-THROUGH INTERCHANGE (COUPLER)

PART NO.	BODY SIZE	BARB CONFIGURATION	BODY MATERIAL
2ES2-B	1/4"	1/4" Hose Barb	Brass
3ES3-B	3/8"	3/8" Hose Barb	Brass
4ES4-B	1/2"	1/2" Hose Barb	Brass
6ES6-B	3/4"	3/4" Hose Barb	Brass
8ES8-B	1"	1" Hose Barb	Brass



(Standard Hose Barb)

E-SERIES STRAIGHT-THROUGH INTERCHANGE (NIPPLE)

PART NO.	BODY SIZE	BARB CONFIGURATION	BODY MATERIAL
E2S2	1/4"	1/4" Hose Barb	Steel
E2S2-B	1/4"	1/4" Hose Barb	Brass
E3S3	3/8"	3/8" Hose Barb	Steel
E3S3-B	3/8"	3/8" Hose Barb	Brass
E4S4	1/2"	1/2" Hose Barb	Steel
E4S4-B	1/2"	1/2" Hose Barb	Brass
E6S6	3/4"	3/4" Hose Barb	Steel
E6S6-B	3/4"	3/4" Hose Barb	Brass
E8S8	1"	1" Hose Barb	Steel
E8S8-B	1"	1" Hose Barb	Brass



(Standard Hose Barb)