

AG-Series Hydraulic Couplings

Interchange Data:

- Pioneer Agricultural Interchange
- Parker/Pioneer 4000 Series, Faster NS/NV-Series
- Safeway Series-S20, Stucchi IR-Series, Snap-Tite 60-Series



Materials:

- Machined components are manufactured using solid Steel bar stock
- Stainless Steel balls, retaining rings, and springs maximise corrosion resistance and extend service life
- Steel componentry is plated using ROHS Compliant Trivalent Chrome
- Steel coupler sleeves are hardened to resist deformation and maximise service life
- Steel nipples are hardened to provide heavy duty performance and resist brinelling

Seal Components:

- Nitrile (Buna-N) seals are standard, providing a temperature range of -40°C to +121°C (-40°F to +250°F)
- Couplers have a PTFE Anti-Extrusion ring
- Poppet valve seals are crimped in place to maintain integrity during excessive flow conditions and pressurised connection
- Piloted ball valve has a seal that is crimped to prevent low-pressure leakage

Rated Pressure Chart:

AG-SERIES AGRICULTURAL INTERCHANGE (CONNECTED)								
BODY SIZE	BALL STEEL COUPLER/PLUG				POPPET STEEL COUPLER/PLUG			
	Maximum Working		Burst		Maximum Working		Burst	
	PSI	Bar	PSI	Bar	PSI	Bar	PSI	Bar
1/4"	4,000	275	24,400	1,700	4,000	275	21,000	1,500
3/8"	4,000	275	25,000	1,700	4,000	275	23,100	1,600
1/2"	4,000	275	16,500	1,100	4,000	275	16,500	1,100
3/4"	3,000	200	15,800	1,050	3,000	200	10,300	700
1"	3,000	200	13,500	900	3,000	200	13,000	900

Technical Specifications:

BODY SIZE	INTERCHANGE STANDARDS				FUNCTIONAL PARAMETERS				
	U.S. MILITARY	U.S. GOVERNMENT	INTERNATIONAL STANDARDS	ANSI/NFPA STANDARDS	LOCKING BALL QUANTITY	AIR INCLUSION	FLUID LOSS	VACUUM INCH HG	FLOW ΔP = 22 PSI L/MIN
1/4"	-	-	-	-	8	1.1cc	0.9cc	26.5	15
3/8"	-	-	-	-	9	2.6cc	1.8cc	26.5	23
1/2"	-	-	ISO7241 'A'	-	9	3.8cc	2.9cc	26.5	45
3/4"	-	-	ISO5675	-	12	10.8cc	9.7cc	26.5	102
1"	-	-	-	-	12	15.9cc	15.3cc	26.5	180



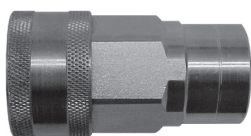
AG-SERIES AGRICULTURAL INTERCHANGE (COUPLER DUST PLUG)			
PART NO.	BODY SIZE	CAP LANYARD	BODY MATERIAL
2AGDP	1/4"	Elastomer	Elastomer
3AGDP	3/8"	Elastomer	Elastomer
4AGDP*	1/2"	Elastomer	Elastomer
6AGDP	3/4"	Elastomer	Elastomer
8AGDP	1"	Elastomer	Elastomer

* For the 1/2" please refer to the colour coded K Series Dust Caps and Dust Plugs on Page 16



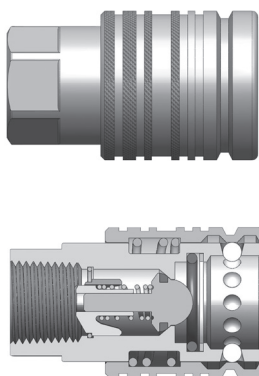
AG-SERIES AGRICULTURAL INTERCHANGE (NIPPLE DUST CAP)			
PART NO.	BODY SIZE	CAP LANYARD	BODY MATERIAL
AG2DC	1/4"	Elastomer	Elastomer
AG3DC	3/8"	Elastomer	Elastomer
AG4DC*	1/2"	Elastomer	Elastomer
AG6DC	3/4"	Elastomer	Elastomer
AG8DC	1"	Elastomer	Elastomer

* For the 1/2" please refer to the colour coded K Series Dust Caps and Dust Plugs on Page 16



(Female Thread)

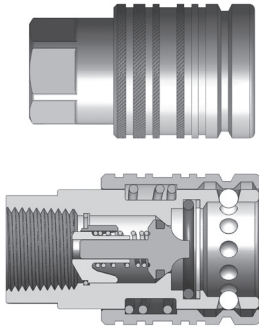
AG-SERIES AGRICULTURAL INTERCHANGE (COUPLER)			
PART NO.	BODY SIZE	THREAD SIZE	BODY MATERIAL
2AGF2	1/4"	1/4"-18 NPTF	Steel
2AGF2-PV	1/4"	1/4"-18 NPTF	Steel
3AGF3	3/8"	3/8"-18 NPTF	Steel
3AGF3-PV	3/8"	3/8"-18 NPTF	Steel
4AGF4	1/2"	1/2"-14 NPTF	Steel
4AGF4-PV	1/2"	1/2"-14 NPTF	Steel
4AGBF4	1/2"	1/2"-14 BSPP	Steel
4AGBF4-PV	1/2"	1/2"-14 BSPP	Steel
4AGOF4	1/2"	3/4"-16 ORB	Steel
4AGOF4-PV	1/2"	3/4"-16 ORB	Steel
4AGOF5	1/2"	7/8"-14 ORB	Steel
4AGOF5-PV	1/2"	7/8"-14 ORB	Steel
4AGF6	1/2"	3/4"-14 NPTF	Steel
4AGF6-PV	1/2"	3/4"-14 NPTF	Steel
4AGBF6	1/2"	3/4"-14 BSPP	Steel
4AGBF6-PV	1/2"	3/4"-14 BSPP	Steel
6AGF6	3/4"	3/4"-14 NPTF	Steel
6AGF6-PV	3/4"	3/4"-14 NPTF	Steel
8AGF8	1"	1"-11 1/2 NPTF	Steel
8AGF8-PV	1"	1"-11 1/2 NPTF	Steel



AG-SERIES AGRICULTURAL PUSH-PULL BALL VALVE COUPLER (FEMALE THREADS)			
PART NO	BODY SIZE	THREADS	MATERIAL
4AGF4-PS	1/2"	1/2" - 14 NPTF	Steel
4AGOF4-PS	1/2"	3/4" - 16 ORB	Steel
4AGOF5-PS	1/2"	7/8" - 14 ORB	Steel
4AGF6-PS	1/2"	3/4" - 14 NPTF	Steel

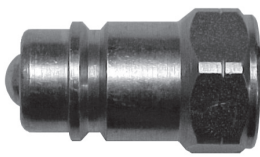
Quick Release Couplings

E

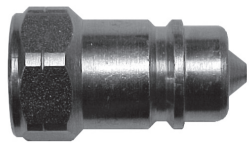


AG-SERIES AGRICULTURAL PUSH-PULL POPPET VALVE COUPLER (FEMALE THREADS)

PART NO	BODY SIZE	THREADS	MATERIAL
4AGF4-PV-PS	1/2"	1/2" - 14 NPTF	Steel
4AGOF4-PV-PS	1/2"	3/4" - 16 ORB	Steel
4AGOF5-PV-PS	1/2"	7/8" - 14 ORB	Steel
4AGF6-PV-PS	1/2"	3/4" - 14 NPTF	Steel



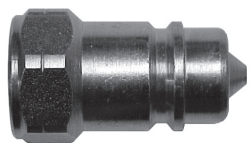
(Female Thread)



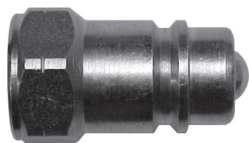
Poppet Valve Style (-PV)

AG-SERIES AGRICULTURAL INTERCHANGE (NIPPLE)

PART NO.	BODY SIZE	THREAD SIZE	BODY MATERIAL
AG2F2	1/4"	1/4"-18 NPTF	Steel
AG2F2-PV	1/4"	1/4"-18 NPTF	Steel
AG3F3	3/8"	3/8"-18 NPTF	Steel
AG3F3-PV	3/8"	3/8"-18 NPTF	Steel
AG4F4	1/2"	1/2"-14 NPTF	Steel
AG4F4-PV	1/2"	1/2"-14 NPTF	Steel
AG4BF4	1/2"	1/2"-14 BSPP	Steel
AG4BF4-PV	1/2"	1/2"-14 BSPP	Steel
AG4OF4	1/2"	3/4"-16 ORB	Steel
AG4OF4-PV	1/2"	3/4"-16 ORB	Steel
AG4OF5	1/2"	7/8"-14 ORB	Steel
AG4OF5-PV	1/2"	7/8"-14 ORB	Steel
AG4F6	1/2"	3/4"-14 NPTF	Steel
AG4F6-PV	1/2"	3/4"-14 NPTF	Steel
AG4BF6	1/2"	3/4"-14 BSPP	Steel
AG4BF6-PV	1/2"	3/4"-14 BSPP	Steel
AG6F6	3/4"	3/4"-14 NPTF	Steel
AG6F6-PV	3/4"	3/4"-14 NPTF	Steel
AG8F8	1"	1"-11 1/2 NPTF	Steel
AG8F8-PV	1"	1"-11 1/2 NPTF	Steel



Poppet Valve Style (-PV)



Standard Ball Valve Style

Dixon carries two valve styles for the Agricultural coupling series, 'Ball' valve and 'Poppet' valve. The 'Ball' valve coupling has historically provided greater longevity while the 'Poppet' valve will improve flow while in operation.