

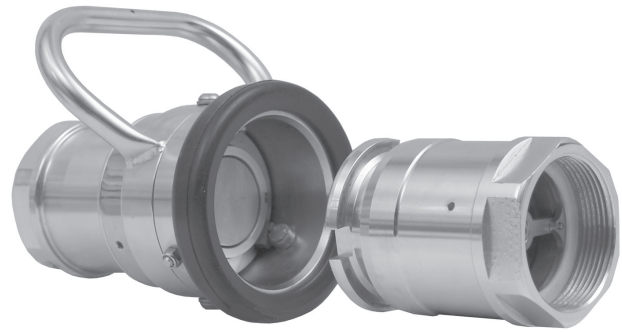
Tanker Couplings

Dry Disconnect Couplings

When your product is:

- Expensive
- Expensive to clean up
- Expensive to reprocess or dispose
- Hazardous to workers or the environment
- Prone to accidental spillage and product loss

Dry Disconnect Couplings are designed for quick and spill free connection and disconnection of hoses and pipelines. They are used by producers of ink, adhesives, fatty acids, pharmaceuticals, liquid soaps, petroleum, chemicals, agricultural and a wide variety of common caustic and specialty acids.



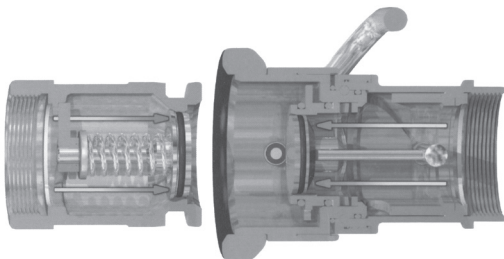
- **Easy to handle -**
Push and turn - free flow, turn and pull - closed
- **Time saving-**
No need to drain hoses or pipe systems
- **Economical-**
No loss or spillage of liquids at connection or disconnection
- **Safety-**
The valve cannot be opened until the unit is coupled
- **Environment friendly-**
Accidental spillage eliminated
- **Safe and reliable-**
Due to rugged construction

- **Selectivity-**
Optional selectivity for preventing contamination due to incorrect and cross-coupling
- **Product life-**
Uncomplicated design and high quality materials ensures longer product life
- **Working Pressure -**
Aluminium: 260 psi / 18 bar
Brass/ Gunmetal: 360 psi / 25 bar
Stainless Steel: 360 psi / 25 bar
- **Optional Seals-**
EPDM BR - nitrile
Kalrez® Chemraz®
Perlast®

Interchanges with Avery Hardoll and Todo-matic®

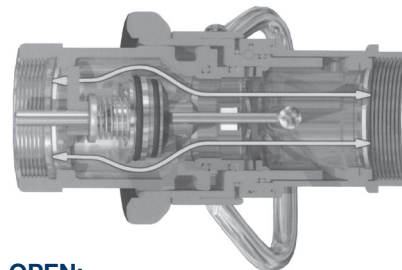
How it works

The principle of operation is identical for all sizes of couplings.



CLOSED:

- Turn and pull
It's released - no spillage



OPEN:

- Push and turn
It's coupled - full flow

Dry Quick Disconnect Couplers

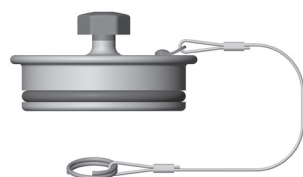
Hose Unit

- Coupler has built-in swivel
- Stainless Steel ball bearings
- Shaft journal in stainless steel embedded in PTFE to eliminate seizure
- Riveted piston pin to minimise the risk for failure under extreme pressure conditions
- Protecting ring is weather resistant rubber
- Electrically conductive
- All wetted parts are stainless steel
- Rollers for the stainless steel units are Hastelloy™ C276 on the stainless steel shaft
- Rollers for the Aluminium and Brass units are Aluminium-bronze on the stainless steel shaft



DRY QUICK DISCONNECT COUPLERS x FEMALE THREAD WITH VITON® SEALS

PART NO.	FEMALE NTP/BSP	BODY SIZE	BODY MATERIAL
DDC150SS	1 1/2"	70mm	316 Stainless Steel
DDC200SS	2"	70mm	316 Stainless Steel
DDC300SS105	3"	105mm	316 Stainless Steel
DDC300SS	3"	119mm	316 Stainless Steel
DDC400SS	4"	164mm	316 Stainless Steel
DDC150AL	1 1/2"	70mm	Anodised Aluminium
DDC200AL	2"	70mm	Anodised Aluminium
DDC300AL105	3"	105mm	Anodised Aluminium
DDC300AL	3"	119mm	Anodised Aluminium
DDC400AL	4"	164mm	Anodised Aluminium
DDC150BR	1 1/2"	70mm	Brass
DDC200BR	2"	70mm	Brass
DDC300GM105	3"	105mm	Gunmetal
DDC300GM	3"	119mm	Gunmetal
DDC400GM	4"	164mm	Gunmetal



COMPOSITE DUST PLUGS FOR COUPLERS

PART NO.	SIZE	BODY SIZE
DDDP150	1 1/2" and 2"	70mm
DDDP300105	3"	105mm
DDDP300	3"	119mm
DDDP400	4"	164mm

Tanker Couplings

Dry Quick Disconnect Adapters

Tank Unit

- The adapter is usually installed on the tank or manifold
- Available in female NPT/BSP or 150# ASA flange
- Conical valve seat to eliminate the risk for “piston blow out”
- PTFE bearing between the piston shaft and the piston guide to eliminate the risk for seizure

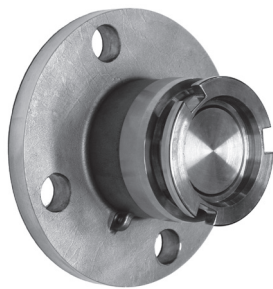
Construction:

- Aluminium adapter - Aluminium poppet, stainless steel internal parts
- Stainless Steel adapter - Stainless steel poppet, stainless steel internal parts
- Brass / Gunmetal adapter - Brass poppet, Brass and stainless steel internal parts



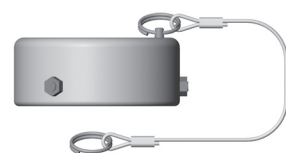
DRY QUICK DISCONNECT ADAPTERS x FEMALE THREAD WITH VITON® SEALS

PART NO.	FEMALE NPT/BSP	BODY SIZE	BODY MATERIAL
DDA150SS	1 1/2"	70mm	316 Stainless Steel
DDA200SS	2"	70mm	316 Stainless Steel
DDA300SS105	3"	105mm	316 Stainless Steel
DDA300SS	3"	119mm	316 Stainless Steel
DDA400SS	4"	164mm	316 Stainless Steel
DDA150AL	1 1/2"	70mm	Anodised Aluminium
DDA200AL	2"	70mm	Anodised Aluminium
DDA300AL105	3"	105mm	Anodised Aluminium
DDA300AL	3"	119mm	Anodised Aluminium
DDA400AL	4"	164mm	Anodised Aluminium
DDA150BR	1 1/2"	70mm	Brass
DDA200BR	2"	70mm	Brass
DDA300GM105	3"	105mm	Gunmetal
DDA300GM	3"	119mm	Gunmetal
DDA400GM	4"	164mm	Gunmetal



DRY QUICK DISCONNECT ADAPTERS x 150# ASA FLANGE WITH VITON® SEALS

PART NO.	FEMALE NPT/BSP	BODY SIZE	BODY MATERIAL
DDA150SSFL	1 1/2"	70mm	316 Stainless Steel
DDA200SSFL	2"	70mm	316 Stainless Steel
DDA300SS105FL	3"	105mm	316 Stainless Steel
DDA300SSFL	3"	119mm	316 Stainless Steel
DDA400SSFL	4"	164mm	316 Stainless Steel
DDA150ALFL	1 1/2"	70mm	Anodised Aluminium
DDA200ALFL	2"	70mm	Anodised Aluminium
DDA300AL105FL	3"	105mm	Anodised Aluminium
DDA300ALFL	3"	119mm	Anodised Aluminium
DDA400ALFL	4"	164mm	Anodised Aluminium
DDA150BRFL	1 1/2"	70mm	Brass
DDA200BRFL	2"	70mm	Brass
DDA300GM105FL	3"	105mm	Gunmetal
DDA300GMFL	3"	119mm	Gunmetal
DDA400GMFL	4"	164mm	Gunmetal



COMPOSITE DUST CAPS FOR ADAPTERS

PART NO.	SIZE	BODY SIZE
DDDC150	1 1/2" and 2"	70mm
DDDC300105	3"	105mm
DDDC300	3"	119mm
DDDC400	4"	164mm