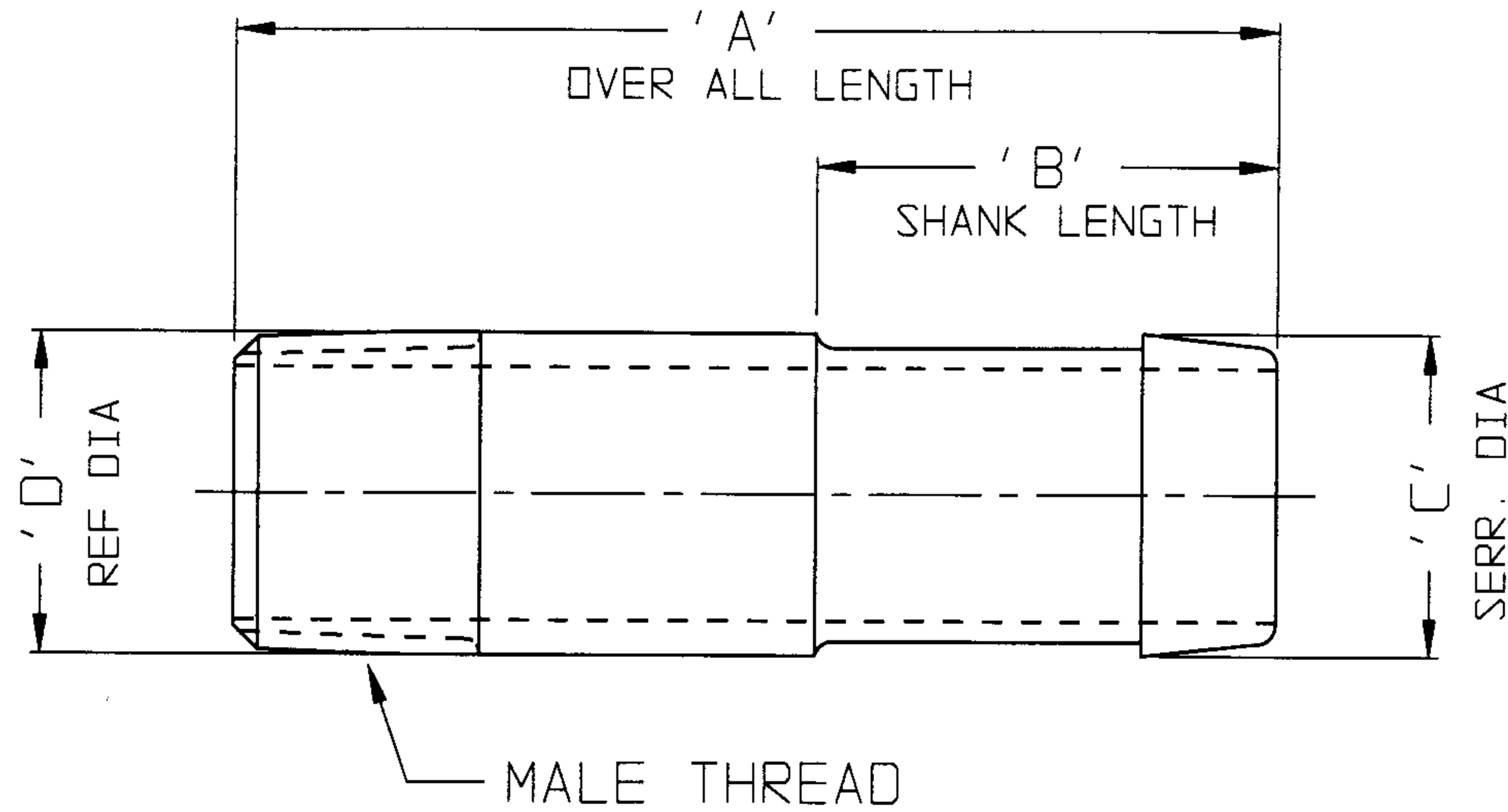


KRNXX1

8-14-08

CUSTOMER DWG



AGREEMENT TO MAINTAIN CONFIDENTIALITY

This drawing is owned by Dixon Valve & Coupling Co. and shall be returned upon demand. It is loaned on condition that it shall not be copied or reproduced or submitted to others without the owners consent. In accepting it subject to this condition the recipient further agrees that this drawing or any design detail or concept disclosed herein shall not be used in any way detrimental to or in competition with the Owner. If the recipient does not agree to the terms of this agreement, they shall return this drawing immediately.



The Right Connection™

CUSTOMER DWG

KRN861	3.3/8	1.1/2	1.1/16	1.050	3/4 NPT
KRN661	3.1/4	1.3/8	27/32	1.050	3/4 NPT
KRN641	3.1/8	1.3/8	27/32	.840	1/2 NPT
KRN541	3.1/8	1.3/8	23/32	.840	1/2 NPT
KRN531	3.1/8	1.3/8	21/32	.675	3/8 NPT
KRN431	3	1.3/8	19/32	.675	3/8 NPT
PART NO.	'A'	'B'	'C'	'D'	MALE THREAD

**DIXON VALVE & COUPLING CO.**  
U. S. A.

TITLE

"KING" STEEL NIPPLES  
FOR ONE CLAMP

DRAWN BY:

*Diane* 10/19/95

CHECKED BY:

*a*

APPROVAL:

*a*

MAT'L

CARBON STEEL PIPE

KRNXX1